

## Aim of HSE & Genio Dementia Programme

- Support the person with dementia to remain at home living well for as long as possible and to improve the care system for people with dementia:
  - Develop a range of community-based, personalised responses for people with dementia and their carers – 9 sites
  - Develop integrated care pathways in acute hospitals – 3 sites
  - Support the implementation of the National Dementia Strategy – particularly Intensive Home Care Packages (IHCPs) – 4 new sites


## Projects supported by the HSE & Genio Dementia Programme

Since 2011 innovation funding has been awarded to 9 regional community-based & 3 integrated care pathways projects



## Complex issue...

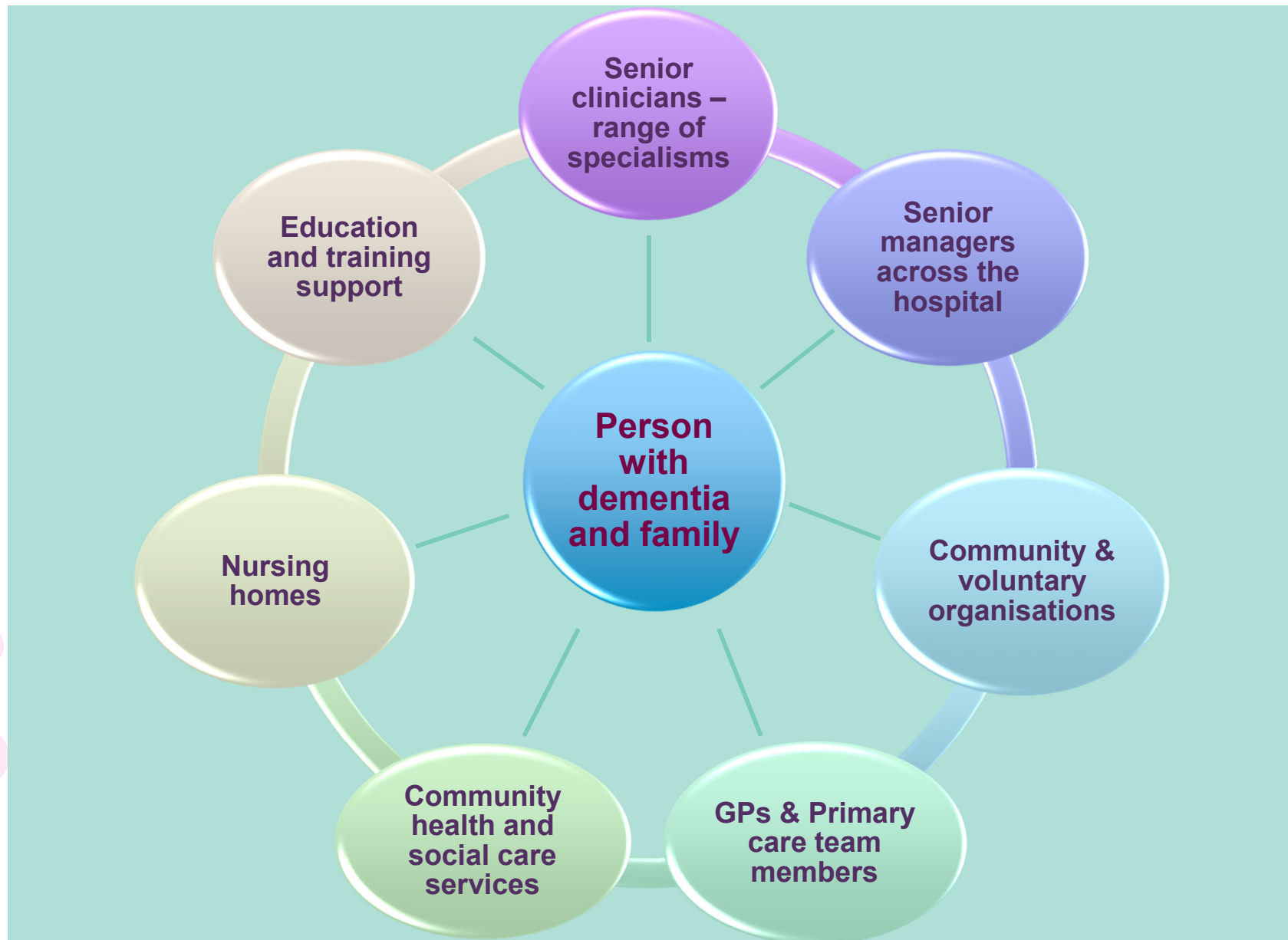
- Multi-dimensional
- Multiple actors – multiple settings
- Long-term disorder – often co-morbidities
- Service gaps & lack of integration
- Longer length of stay and poorer outcomes

 No single service/agency has the expertise or resource to address dementia effectively

## Acute hospitals...Complex systems

- Multiple interconnected elements
- Multiple stakeholders
- Range of initiatives on top of 'business as usual'

“When dealing with a complex system, it is better to conduct a range of smaller innovations and find ways to constantly evaluate and learn from the results and adjust the next steps rather than to work to a set plan.” (Allen, 2015)



## How are consortia different?

- Explicit agenda and agreed goals
- Uses co-production
- Active membership
- Focus on the person with dementia
- Develops an integrated and shared response
- Measuring progress
- Sharing learning

## **Making person-centred care ‘real’: personalised supports in acute care context**

- person with dementia and carer are central to designing ‘what they need’ – different to needs assessment
- flexible and responsive - stage of illness and co-morbidities
- Focused on maintaining personhood:
  - maintaining dignity, recognising strengths, existing capacities and life history, avoiding an exclusive focus on deficits

## Purpose of today's event

- Share what has been learned by 3 hospital sites so that we can:
  - Discuss how we can sustain the beneficial and effective innovations that have emerged.
  - Begin to implement similar approaches in other hospitals?
  - As a starting point...identify what we can do now, that might lead to immediate improvements for people with dementia.



## Closing comments

- Keep the focus on the outcome – how can a proposal/initiative result in a better experience for the person with dementia
- Identify how our own systems may be getting in the way of producing good outcomes for the person and work with all interested parties to identify solutions
- Identify, support and unleash the champions that are present in every hospital

## Our next steps

- Today's proceedings will be sent to all attendees
- We will be in touch for feedback and to follow up with anyone who wants more information
- We will continue to work with the HSE and others throughout the system to explore how effective initiatives can be sustained and scaled